

ASSISTED LIVING & MEMORY CARE
COMMUNITY

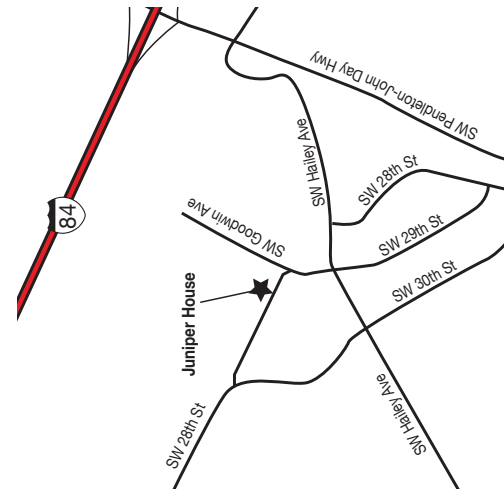


PENDLETON

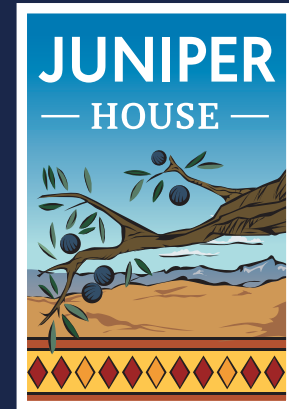
Working every day to be the premier city in Eastern Oregon



301 SW 28th Drive
Pendleton, Oregon 97801
541.278-0666
www.juniperhousealf.com



Find us online! www.juniperhouseALF.com  @juniperhouseALF



ASSISTED LIVING & MEMORY CARE
COMMUNITY



301 SW 28th Drive, Pendleton, Oregon 97801 Ph (541) 278-0666

What Makes Juniper House So Special?

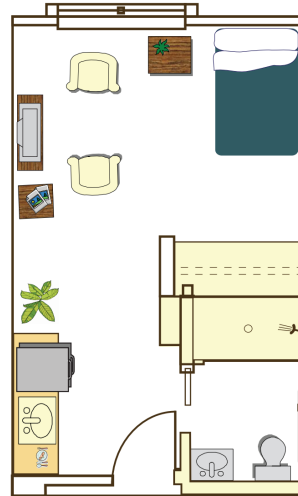
- Personal care staff available around the clock.
- Professional nursing support and routine nursing care.
- Medication management and health monitoring.
- Assistance with bathing, dressing, grooming, incontinent care and other personal care, as needed.
- Three delicious meals a day. To assist with medical needs, customized diets are also available.
- Life Enrichment Activity Program (LEAP) - a health and wellness program focused on fall reduction, increased strength and energy, and cognitive stimulation - specifically designed to each individual's ability.
- Small pets welcome.



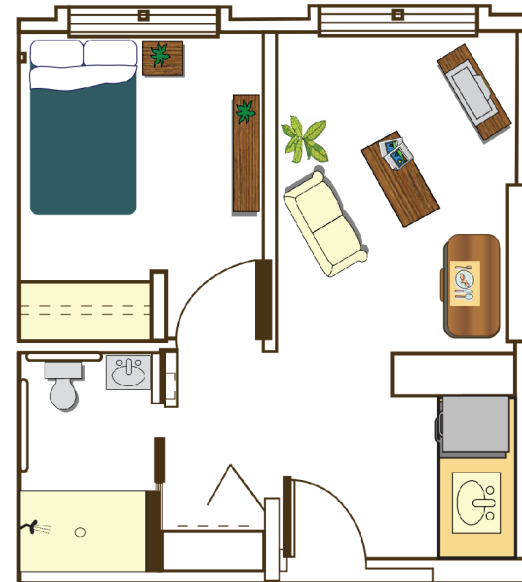
301 SW 28th Drive, Pendleton, Oregon 97801 Ph (541) 278-0666

Room Floor Plans

Studio



One Bedroom



*Room size may vary. Image not to scale.

Find us online! www.juniperhouseALF.com



@juniperhouseALF

Our Community



Juniper House, an Assisted Living and Memory Care community, is located in the historic town of Pendleton, Oregon, just off the Oregon Trail.

Pendleton is also home to the Pendleton Round-Up Rodeo, an annual week-long event that Juniper House is proud to be a part of.

Make Juniper House Your Home

Our professional staff offer unparalleled service and a commitment to making each day meaningful for our residents. The cozy setting, quality services and opportunities for Life Enrichment are just a few of the reasons to make Juniper House your home.



We welcome Medicaid, long-term care insurance and Veteran's assistance.

301 SW 28th Drive, Pendleton, Oregon 97801 Ph (541) 278-0666